

Interim Guidelines for Evaluation & Management of Community-Associated Methicillin Resistant *Staphylococcus aureus* Skin and Soft Tissue Infections in Outpatient Settings

September 2, 2004

Prepared by:

Tim Dellit, MD, University of Washington and Infectious Diseases Society of Washington

Jeffrey Duchin, MD, Public Health – Seattle & King County and University of Washington

Jo Hofmann, MD, Washington State Department of Health and University of Washington

Erika Gurmai Olson, MD, Tacoma-Pierce County Health Department Antibiotic Resistance Task Force



CONTENTS

I. Introduction.....	3
II. Background.....	3
III. Clinical approach to potential <i>S. aureus</i> skin and soft tissue infections (SSTI)	4
IV. Assessment of risk factors for MRSA.....	5
V. Management of <i>S. aureus</i> SSTI based on severity (adapted from Eron criteria)	6
VI. Empiric oral antimicrobial therapy for suspected MRSA infections (see Table 1)...	7
VII. Infection control for outpatient management of <i>S. aureus</i> SSTI, including MRSA ..	8
VIII. Information for patients with <i>S. aureus</i> infection (including MRSA) and their caregivers	9
IX. Eradication of MRSA colonization (decolonization).....	10
X. References	11
XI. Acknowledgements	12
Figure 1. Management of Suspected <i>S. aureus</i> Skin and Soft Tissue Infections.....	13
Table 1. Interim Guidelines for Empiric Oral Antimicrobial Treatment of Outpatients with Suspected MRSA Skin and Soft Tissue Infections.....	14
Table 2. Eradication of MRSA Colonization.....	14

I. **Introduction**

This document is intended to provide interim clinical guidance for management of *Staphylococcus aureus* skin and soft tissue infections (SSTI) in outpatients in the setting of increasing levels of community-associated methicillin-resistant *S. aureus* (CA-MRSA) until more definitive guidelines are available from the Centers for Disease Control and Prevention and/or medical professional organizations. The guidelines were developed collaboratively by the Infectious Diseases Society of Washington and Public Health – Seattle and King County, Tacoma-Pierce County Health Department, and Washington State Department of Health. Key points in the document are highlighted in bold.

Clinicians should consider other relevant potential etiologies in addition to MRSA when evaluating patients with SSTI. These guidelines do not address the general approach to management of skin and soft tissue infections or management of hospitalized patients, for which other references are available.

The figures and tables can be removed from the document and posted for reference in clinical settings.

- Figure 1. **Management of Suspected *S. aureus* Skin and Soft Tissue Infections**
- Table 1. **Empiric Oral Antimicrobial Agents for Treatment of Outpatients with Suspected MRSA**
- Table 2. **Eradication of MRSA Colonization**

II. **Background**

Methicillin-resistant *S. aureus* (MRSA) are resistant to β -lactam antibiotics, including penicillinase-resistant penicillins (methicillin, oxacillin, nafcillin) and cephalosporins. MRSA are recognized pathogens among hospitalized patients and persons with certain healthcare-associated risk factors. Recent reports suggest that the frequency of MRSA infections among otherwise healthy persons without typical healthcare-associated MRSA (HA-MRSA) risk factors is increasing. The full clinical spectrum, epidemiology, and risk factors for CA-MRSA have yet to be defined. Current evidence suggests that these strains are genetically distinct from HA-MRSA, cause a different spectrum of illness (including SSTI that may be severe), and have different antibiotic susceptibility patterns than HA-MRSA. Severe invasive disease (e.g., bacteremia/sepsis syndrome, pneumonia, pyomyositis, bone and joint infections) due to CA-MRSA has been reported less frequently than SSTI.^{1,2,3}

III. Clinical approach to potential *S. aureus* skin and soft tissue infections (SSTI)

The clinical approach is based on available information about risk factors for MRSA, the clinical presentation and severity of the infection, and the presence of co-morbidities (see Figure 1).

- **Incision and drainage (I & D) is of paramount importance in treatment of abscesses and should be done whenever possible. For mild uncomplicated abscesses, local wound care including I & D of fluctuant lesions without antibiotic use is a reasonable treatment option.**⁹
 - Antibiotic therapy alone without I & D is not recommended for treatment of fluctuant abscesses.
- **For outpatients with potential MRSA infections, it is important to obtain specimens for culture and susceptibility testing (before initiating antibiotic treatment).**
 - If I & D is not performed, other options include culture of spontaneously draining wounds and/or culture and biopsy of the central area of cellulitis (note: superficial culture of open wounds may yield skin-colonizing bacteria and not the true pathogen).
- **Clinicians should determine if household or other close contacts of the patient have SSTI or other infections compatible with MRSA, and facilitate their evaluation and treatment if indicated.**
- MRSA infections are reportable in some local health jurisdictions.

IV. Assessment of risk factors for MRSA

MRSA should be considered in the differential diagnosis of all patients presenting with skin and soft tissue infections as well as those with more severe illness compatible with *S. aureus* infection. Risk factors associated with CA-MRSA are not well defined and infections have occurred among previously healthy persons with no identifiable risk factors.^{3,4} Identifying patients at increased risk for MRSA can guide empiric antibiotic selection and avoid use of agents ineffective against MRSA (particularly cephalosporins).

Risk factors that should increase the level of suspicion for MRSA:^{5,6,7}

- History of MRSA infection or colonization
- History in the past year of:
 - Hospitalization
 - Admission to a long term care facility (nursing home, skilled nursing, or hospice)
 - Dialysis and end-stage renal disease
 - Diabetes mellitus
 - Surgery
 - Permanent indwelling catheters or medical devices that pass through the skin into the body
 - Injection drug use
- High prevalence of MRSA in local community or patient population (as indicated by results of local antimicrobial susceptibility testing, clinical experience and surveillance data)
- Recent and/or frequent antibiotic use
- Close contact with someone known to be infected or colonized with MRSA
- Recurrent skin disease
- Crowded living conditions (e.g., homeless shelters)
- Incarceration
- Infection among sports participants who have:
 - Skin-to-skin contact
 - Pre-existing skin damage
 - Shared clothing and/or equipment
- Certain populations (e.g., Pacific Islanders, Alaskans Natives, Native Americans)
- Outbreaks of MRSA have been reported among men who have sex with men
- Also consider MRSA in patients with SSTI and poor response to β -lactam antibiotics

V. Management of S. aureus SSTI based on severity (adapted from Eron criteria)⁸

- **Mild: Eron Class 1** (Patient has no signs or symptoms of systemic toxicity and no uncontrolled co-morbidities [e.g., peripheral vascular disease, diabetes mellitus, chronic venous insufficiency, morbid obesity] that may complicate treatment)
 - Outpatient management without oral antimicrobials including I & D of abscesses and wound care (with or without topical antimicrobials) may be sufficient in the majority of cases.⁹
 - Consider oral antimicrobials, based on clinical judgment, particularly if I & D is not possible and/or if MRSA is suspected.
 - If oral antimicrobial therapy is administered, therapy with a β -lactam (e.g., cephalexin or dicloxacillin) may be adequate in cases where MRSA is not suspected.
 - If suspicion for MRSA is high based on the presence of one or more risk factors for MRSA, (including high prevalence of MRSA locally), consider empiric therapy with agents active against MRSA (see Table 1).
 - Monitor patients for response to therapy and adjust antimicrobials based on culture and susceptibility results.
- **Moderate: Eron Class 2** (Patient is either systemically ill [e.g. febrile] with stable co-morbidities or systemically well with co-morbidities that may complicate or delay resolution of their SSTI)
 - Manage as in- or outpatient, depending on degree of illness and co-morbidity; may require initial hospitalization and parenteral antimicrobials with subsequent conversion to oral therapy once signs and symptoms of infection are improving.
 - Monitor outpatients carefully for response to initial oral therapy.
 - Treat empirically for MRSA in patients with risk factors for, or factors potentially associated with, MRSA (including high prevalence of MRSA locally).
 - Adjust antimicrobials based on culture and susceptibility results.
- **Severe: Eron Class 3** (Patient appears toxic [e.g., tachycardia, tachypnea, hypotension, altered mental status], or non-toxic, but has unstable co-morbidities that may complicate therapy)
AND
- **Critically Ill: Eron Class 4** (Patient has sepsis syndrome or life-threatening infection such as necrotizing fasciitis)
 - Manage as inpatient with empiric broad-spectrum parenteral antimicrobial coverage active against MRSA, including vancomycin.
 - Surgical intervention may be necessary.
 - Adjust antimicrobials based on culture and susceptibility results.
 - Consult infectious disease specialist if patient does not improve or alternative antimicrobials (e.g., linezolid) are being considered.
 - Consider discharge to complete a course of outpatient parenteral or oral therapy, based on clinical improvement, toleration of therapy and availability for follow-up.

VI. Empiric oral antimicrobial therapy for suspected MRSA infections (see Table 1)

- There are no data from randomized clinical trials on which to base treatment recommendations.
- In many patients with mild (Eron Class 1) infections, I & D of abscesses without oral antimicrobial therapy is an adequate treatment option.⁹
- Antimicrobial therapy should be reserved for mild infections that cannot be treated with I & D and for more serious infections (Eron Classes 2-4).
- Patients should be monitored for response to therapy, particularly those treated with I & D alone.
- Empiric antibiotic regimens should be modified based on results of culture and susceptibility testing of isolates from affected skin and soft tissue or wound drainage.
- *S. aureus* isolates resistant to erythromycin and susceptible to clindamycin should be evaluated for inducible clindamycin resistance (MLSB phenotype) using a “D test.”¹⁰ Consult your clinical laboratory to determine if the “D test” is done routinely or must be specifically requested.
 - If inducible clindamycin resistance is present, an alternative agent should be considered, particularly if the clinical response to clindamycin is poor.¹¹⁻¹⁸
- Although vancomycin has been the “gold standard” for invasive MRSA infections, most CA-MRSA infections are localized SSTI that do not require hospitalization or vancomycin therapy.
- Initial empiric coverage of infections should be based on the prevalence of MRSA in the clinical setting or patient population (ideally guided by local antimicrobial susceptibility patterns for MRSA, if available), as well as the presence of risk factors for, or factors potentially associated with, MRSA.
- Therapy should be modified as necessary based on results of culture and susceptibility testing.
- In patients initially hospitalized for IV therapy, criteria allowing the switch to oral therapy and discharge include:
 - Patient is afebrile for 24 hours, and
 - Clinically improved, and
 - Able to take oral medication, and
 - Has adequate social support and is available for close outpatient follow-up

NOTE:

Group A streptococci (GAS) are another common cause of SSTI, particularly cellulitis and impetigo. If GAS infection is suspected, therapy should include an agent active against this organism (β -lactam, macrolide, clindamycin). Tetracyclines and trimethoprim-sulfamethoxazole, although active against many MRSA, are not recommended treatments for suspected GAS infections.

VII. Infection control for outpatient management of *S. aureus* SSTI, including MRSA

MRSA is a common healthcare-associated pathogen in the United States. The main mode of transmission of MRSA is via hands (especially healthcare workers' hands) which may become contaminated by contact with a) colonized or infected patients, b) colonized or infected body sites of the personnel themselves, or c) devices, items, or environmental surfaces contaminated with body fluids containing MRSA.^{19,20}

- **Contact precautions should be used for ALL patients with open or draining SSTI and all patients known to be infected with MRSA. The standard components of contact precautions adapted for the outpatient setting are:**
 - Examine patient with MRSA in a private room.
 - Wear gloves (clean nonsterile gloves are adequate) when providing care for patients, change gloves after having contact with infective material that may contain high concentrations of microorganisms (e.g., wound drainage or dressings). Remove gloves before leaving the patient's room and wash hands immediately with an antimicrobial agent. After glove removal and handwashing, do not touch potentially contaminated environmental surfaces or items in the patient's room to avoid transfer of microorganisms to other patients and environments.
 - Wear a gown when providing care if there will be substantial contact with the patient's wound. Remove the gown before leaving the examination room.
 - Limit the movement and transport of the patient from the examination room to essential purposes only.
 - Ensure that patient-care items and potentially contaminated surfaces are cleaned and disinfected after use.
 - Clean noncritical medical equipment surfaces with a detergent/disinfectant.
 - Do not use alcohol to disinfect large environmental surfaces.
 - Use barrier protective coverings as appropriate for noncritical surfaces that are: 1) touched frequently with gloved hands during the delivery of patient care; 2) likely to become contaminated with blood or body substances; or, 3) difficult to clean
 - Select EPA-registered disinfectants, if available, and use them in accordance with the manufacturer's instructions.
 - Keep housekeeping surfaces (e.g., floors, walls, tabletops) visibly clean on a regular basis and clean up spills promptly.
 - Use an EPA-registered hospital detergent/disinfectant designed for general housekeeping purposes in patient-care areas when uncertainty exists regarding the presence of multidrug-resistant organisms.
 - **For additional information on infection control, see:**
 - <http://www.cdc.gov/ncidod/hip/ARELIST/mrsahcw.htm>
 - <http://www.cdc.gov/mmwr/preview/mmwrhtml/rr5210a1.htm>

VIII. Information for patients with *S. aureus* infection (including MRSA) and their caregivers⁶

Patients with *S. aureus* infections including MRSA, their family members and close contacts should be thoroughly counseled about measures to prevent spread of infection. Drainage from *S. aureus* infections, wound dressings and other materials contaminated with wound drainage are highly infectious.

Infection control messages for patients to prevent transmission of *S. aureus* SSTI, including MRSA include:

- Keep wounds and lesions covered with clean, dry bandages. This is especially important when drainage is present.
- Wash hands with soap and warm water or alcohol-based hand rub after touching infected skin and bandages. Put disposable waste (e.g., dressings, bandages) in a separate trash bag and close the bag tightly before throwing it out with the regular garbage.
- Advise family members and other close contacts to wash their hands frequently with soap and warm water, especially if they change your bandages or touch the infected area or anything that might have come in contact with the infected area.
- Consider using clean, disposable, nonsterile gloves to change bandages.
- Do not share personal items (e.g., towels, washcloths, razors, clothing, or uniforms) or other items that may have been contaminated by wound drainage.
- Disinfect all non-clothing (and non-disposable) items that come in contact with the wound or wound drainage with a solution of one tablespoon of household bleach mixed in one quart of water (must be prepared fresh each day) or a store-bought, household disinfectant.
- Wash soiled linens and clothes with hot water and laundry detergent. Drying clothes in a hot dryer, rather than air-drying, may also help kill bacteria in clothes.
- Wash utensils and dishes in the usual manner with soap and hot water or using a standard home dishwasher.
- Avoid participating in contact sports or other skin-to-skin contact until the infection has healed.
- Be sure to tell any healthcare providers who treat you that you have a MRSA, a “resistant staph infection.”
- Additional information for patients can be found at the following websites:
 - http://www.cdc.gov/ncidod/hip/ARESIST/mrsa_comm_faq.htm
 - <http://www.metrokc.gov/health/prevcont/mrsa.htm#others>
 - <http://www.tpchd.org/antibiotic/index.htm>
 - <http://www.doh.wa.gov/Topics/antibiotics.htm>

IX. Eradication of MRSA colonization (decolonization)

Treatment to eradicate MRSA colonization is not routinely recommended.

- The efficacy of methods to reduce MRSA recurrence and transmission by decolonizing persons in the outpatient setting has not been established. It may be reasonable to consider decolonization for:
 - Patients with recurrent MRSA infections despite appropriate therapy, and
 - Ongoing MRSA transmission in a well-defined cohort with close contact.
- Optimal regimens for eradication of colonization have not been established; regimens that have been used include:
 - Oral antimicrobials (usually rifampin and trimethoprim-sulfamethoxazole, or rifampin and doxycycline, or rifampin and minocycline) and/or,
 - Nasal decolonization with intranasal topical mupirocin (bid for 5 days).
 - Skin antiseptics (e.g. chlorhexidine baths) has been used in addition to the above regimens.
- Consultation with an infectious disease specialist is recommended before initiating eradication of colonization.

NOTE:

***Rifampin should never be used as a single agent
to treat infection or colonization with MRSA***

Rifampin interacts with methadone, oral hypoglycemics, hormonal contraceptives, anticoagulants, protease inhibitors, phenytoin, theophylline, cardiac glycosides and other drugs

X. References

1. Naimi TS, LeDell KH, Como-Sabetti K, et al. Comparison of community- and health care-associated methicillin-resistant *Staphylococcus aureus* infection. JAMA. 2003;290:2976-84.
2. Vandenesch F, Naimi T, Enright M, et al. Community-acquired methicillin-resistant *Staphylococcus aureus* carrying Panton-Valentine leukocidin genes: worldwide emergence. Emerg Infect Dis 2003; 9:978-84.
3. Said-Salim B, Mathema B, Kreiswirth BM. Community-acquired methicillin-resistant *Staphylococcus aureus*: an emerging pathogen. Infect Control Hosp Epidemiol 2003;24(6):451-5.
4. Waldvogel FA. *Staphylococcus aureus*. Chapter. In: Mandell, Douglas, and Bennett's Principles and Practice of Infectious Diseases. 5th edition. 2000. Churchill Livingstone, Phila. PA.
5. Herold BC, Immergluck LC, Maranan MC, et al. Community-acquired methicillin-resistant *Staphylococcus aureus* in children with no identifying risk. JAMA 1998;279:593-8.
6. CDC. Community-associated MRSA. Frequently asked questions. http://www.cdc.gov/ncidod/hip/ARESIST/mrsa_comm_faq.htm (accessed 17 June 2004)
7. Salgado CD, Farr BM, Calfee DP. Community-associated methicillin-resistant *Staphylococcus aureus*: a meta-analysis of prevalence and risk factors. Clin Infect Dis 2003;36:131-9.
8. Eron LJ, Lipsky BA, Low DE, et al. Managing skin and soft tissue infections: expert panel recommendations on key decision points. J Antimicrob Chemother 2003;52(Suppl 1):13-17.
9. Lee MC, Rios AM, Aten MF, et al. Management and outcome of children with skin and soft tissue abscesses caused by community-acquired methicillin-resistant *Staphylococcus aureus*. Pediatr Infect Dis J 2004;23:123-7.
10. NCCLS. Performance standards for antimicrobial susceptibility testing: 14th informational suppl. NCCLS document M100-S14. NCCLS, 940 West Valley Road, Suite 1400, Wayne, PA 1908-1898 USA, 2004.
11. Markowitz N, Quinn EL, Saravolatz LD. Trimethoprim-sulfamethoxazole compared with vancomycin for the treatment of *Staphylococcus aureus* infection. Ann Intern Med 1992;117:390-8.
12. Yeldandi V, Strodtman R, Lentino JR. In vitro and in vivo studies of trimethoprim-sulphamethoxazole against multiple resistant *Staphylococcus aureus*. J Antimicrob Chemother 1988;22:873-80.
13. Paradisa F, Corti G, Messeri D. Antistaphylococcal (MSSA, MRSA, MSSE, MRSE) antibiotics. Med Clin North Am 2001;85:1-17.
14. Clumeck N, Marcelis L, Amiri-Lamraski MH, et al. Treatment of severe staphylococcal infections with a rifampicin-minocycline association. J Antimicrob Chemother 1984;13(Suppl C):17-22.
15. Yuk JH, Dignani MC, Harris RL, et al. Minocycline as an alternative antistaphylococcal agent. Rev Infect Dis 1991;13:1023-4.
16. Martinez-Aguilar G, Hammerman WA, Mason EO, et al. Clindamycin treatment of invasive infections caused by community-acquired, methicillin-resistant and methicillin-susceptible *Staphylococcus aureus* in children. Pediatr Infect Dis J 2003;22:593-8.
17. Frank AL, Marcinak JF, Mangat PD, et al. Clindamycin treatment of methicillin-resistant *Staphylococcus aureus* infections in children. Pediatr Infect Dis J 2002;21:530-4.
18. Siberry GK, Tekle T, Carroll K, et al. Failure of clindamycin treatment of methicillin-resistant *Staphylococcus aureus* expressing inducible clindamycin resistance in vitro. Clin Infect Dis 2003;37:1257-60.
19. CDC. Guidelines for environmental infection control in health-care facilities: Recommendations of CDC and the Healthcare Infection Control Practices Advisory Committee (HICPAC). MMWR 2003;50(RR10):1-42
20. CDC. MRSA – Information for healthcare personnel. Martinez-Aguilar G, Hammerman WA, Mason EO, et al. <http://www.cdc.gov/ncidod/hip/ARESIST/mrsahcw.htm> (accessed 07/28/04)
21. Bamberger DM, Herndon BL, Dew M, et al. Efficacies of ofloxacin, rifampin, and clindamycin in treatment of *Staphylococcus aureus* abscesses and correlation with results of an in vitro assay of intracellular bacterial killing. Antimicrob Agents Chemother 1997;41:1178-81.
22. Heldman AW, Hartert TV, Ray SC, et al. Oral antibiotic treatment of right-sided staphylococcal endocarditis in injection drug users: Prospective randomized comparison with parenteral therapy. Am J Med 1996;101:68-76.
23. Cheong I, Zin Z, Seong CT, et al. Combined ciprofloxacin/rifampicin therapy in methicillin-resistant *Staphylococcus aureus* (MRSA) infection. Med J Aust 1992;157:71-2.
24. Stevens DL, Herr D, Lampiris H, et al. Linezolid versus vancomycin for the treatment of methicillin-resistant *Staphylococcus aureus* infections. Clin Infect Dis 2002;34:1481-90.
25. Birmingham MC, Rayner CR, Meagher AK, et al. Linezolid for the treatment of multidrug-resistant, gram-positive infections: Experience from a compassionate-use program. Clin Infect Dis 2003;36:159-68.

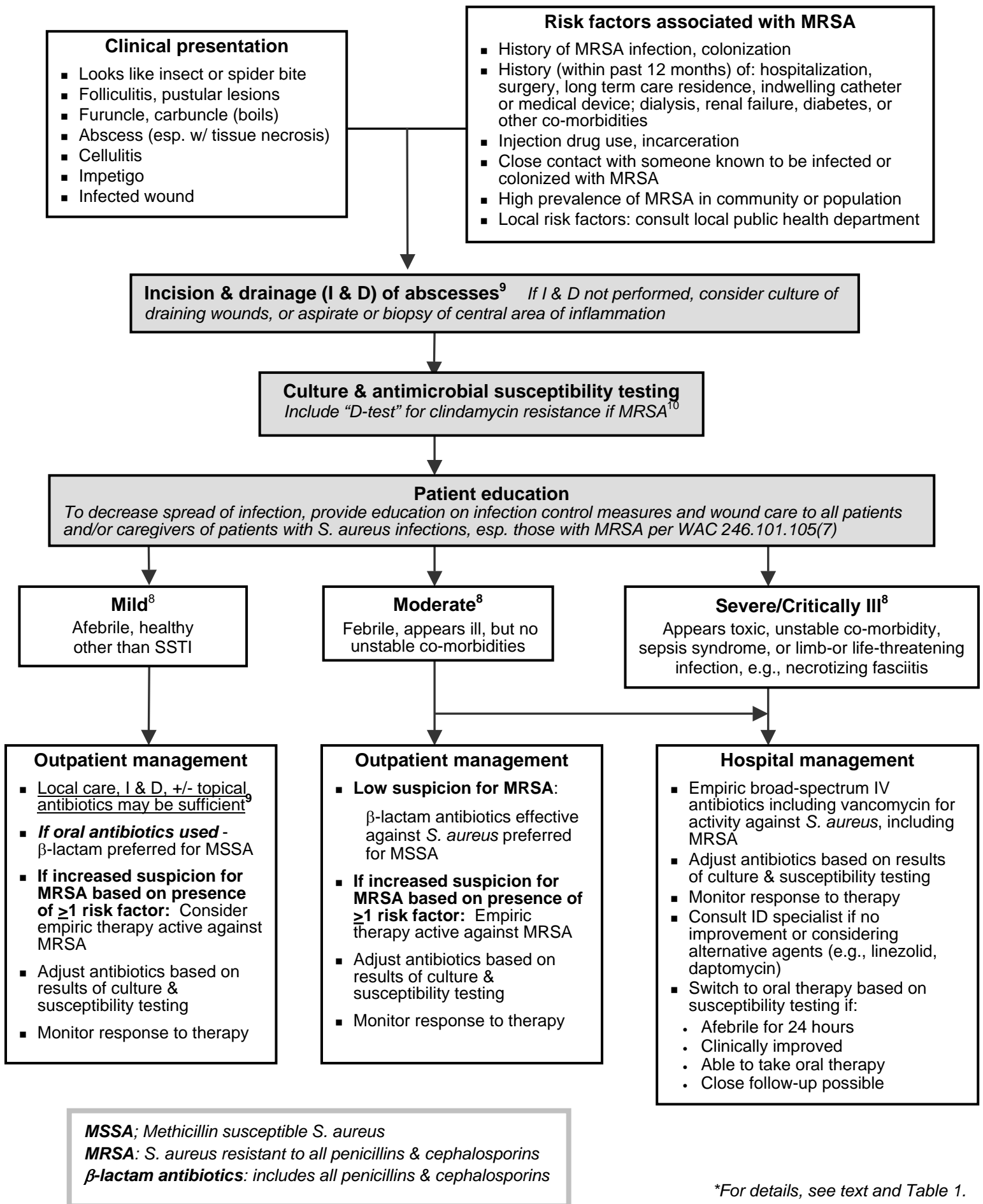
XI. Acknowledgements

Infectious Diseases Society of Washington Board Members: Bill Ehni, MD; Hunter Handsfield, MD; Mike Hori, MD; David Keller MD; Bob Rakita, MD; Bob Thompson, MD; and Bob Harrington, MD (President)

We also thank the following individuals who contributed to the development and/or review of the guidelines.

Gordon Archer, MD, Virginia Commonwealth University; Kip Baggett, MD, MPH, Public-Health – Seattle & King County; Elizabeth Bancroft MD, SM, Los Angeles County Department of Health Services; Carol J. Baker, MD, Baylor College of Medicine; Amy Bode, MD, MPH, Public-Health – Seattle & King County; Ron Broekemeier, RPh, Franciscan Health Systems Pharmacy Services; Jane Burns, MD, Children's Hospital and Regional Medical Center, Seattle; James David Bales, Jr., MD, FACP, Franciscan Medical Group; Carol Buchholz, RN, CHN II, Tacoma-Pierce County Health Department; Henry F. Chambers, MD, University of California, San Francisco; Don Cox, RPh, Lincoln Pharmacy; Robert S. Daum, MD, University of Chicago Hospital; James DeMaio, MD; John Dilworth, MD; Jim Doll, Washington Board of Pharmacy; Gwen Felizardo, RN, Group Health Cooperative; Theresa Fuller, Washington State Department of Health; Mark Grubb, MD, Woodcreek Pediatrics; Norene Harvey, RN, Gentiva Health Services; Ron Hobbs, ND, Washington Association of Naturopathic Physicians; Vincent Hsu, MD, MPH, Public-Health – Seattle & King County; Dana Hurley, Premera Blue Cross; Jeff Ing, Public Health-Seattle & King County; Sheldon L. Kaplan, MD, Baylor College of Medicine; Kathleen LeDell, RN, MPH, Minnesota Department of Health; Benjamin Lipsky, MD, FACP, University of Washington; Ruth Lynfield, Minnesota Department of Health; Wayne McCormick, MD, MPH, University of Washington; Kathryn MacDonald, PhD, RN, Washington State Department of Health; Gregg Matsch, PharmD, BCPS, Abbot Immunology; Monica Raymond, MPH, MS, RN, Tacoma-Pierce County Health Department; Craig Rubens, PhD, MD, Children's Hospital and Regional Medical Center, Seattle; John Sheffield, MD, University of Washington; David Tison, PhD, Multicare; Claudia Willis, MT (ASCP), Franciscan Health System.

Figure 1. Interim Guidelines for Management of Suspected *Staphylococcus aureus* Skin and Soft Tissue infections*



*For details, see text and Table 1.

Table 1. Interim Guidelines for Empiric Oral Antimicrobial Treatment of Outpatients with Suspected MRSA Skin and Soft Tissue Infections (SSTI)

Selection of empiric therapy should be guided by local *S. aureus* susceptibility and modified based on results of culture and susceptibility testing. The duration of therapy for most SSTI is 7-10 days, but may vary depending on severity of infection and clinical response. **NOTE: Before treating, clinicians should consult complete drug prescribing information in the manufacturer’s package insert or the PDR.**

Antimicrobial	Adult Dose	Pediatric Dose
Trimethoprim-sulfamethoxazole (TMP-SMX) DS ¹¹⁻¹³	1 tablet (160 mg TMP/800 mg SMX) PO bid	Base dose on TMP: 8-12 mg TMP (& 40-60 mg SMX) per kg/day in 2 doses; not to exceed adult dose
Minocycline ¹³⁻¹⁵ or doxycycline ¹³	100 mg PO bid	Not recommended for pediatric use – suggest consultation with infectious disease specialist before use
Clindamycin ^{a,13,16,17,21}	300-450 mg PO qid	10-20 mg/kg/day in 3-4 doses; not to exceed adult dose

^a If considering clindamycin, isolates resistant to erythromycin and sensitive to clindamycin should be evaluated for inducible clindamycin resistance (MLS_B phenotype) using the “D test.” Consult with your reference laboratory to determine if “D testing” is routine or must be specifically requested. If inducible resistance is present, an alternative agent to clindamycin should be considered.¹¹

- If Group A streptococcal infection is suspected, oral therapy should include an agent active against this organism (β-lactam, macrolide, clindamycin). Tetracyclines and Trimethoprim-sulfamethoxazole, although active against many MRSA, are not recommended treatments for suspected GAS infections.
- Outpatient use of quinolones or macrolides: Fluoroquinolones^{13,21-23} (e.g., ciprofloxacin, levofloxacin, moxifloxacin, gatifloxacin) and macrolides (e.g., erythromycin, clarithromycin, azithromycin) are NOT recommended for treatment of MRSA because of high resistance rates. If fluoroquinolones are being considered, consult with infectious disease specialist before use.
- Outpatient use of linezolid in SSTI:^{24,25} Linezolid is costly and has great potential for inappropriate use, inducing antimicrobial resistance, and toxicity. Although it is 100% bioavailable and effective in SSTI, it is not recommended for empiric treatment or routine use because of these concerns. It is strongly recommended that linezolid only be used after consultation with an infectious disease specialist to determine if alternative antimicrobials would be more appropriate.

Table 2. Eradication of MRSA Colonization

Efficacy of decolonization in preventing re-infection or transmission in the outpatient setting is not documented, and is NOT routinely recommended. Consultation with an infectious disease specialist is recommended before eradication of colonization is initiated.

Possible eradication regimens include:
Rifampin (Adult dose: 300mg PO bid x 5 days; pediatric dose: 10-20 mg/kg/day in 2 doses not to exceed 600 mg/d x 5 days) may be used in combination with TMP-SMX, OR rifampin with doxycycline, OR rifampin with minocycline, for recurrent MRSA infection despite appropriate therapy. Never use rifampin monotherapy, due to the rapid emergence of resistance. Rifampin interacts with methadone, oral hypoglycemics, hormonal contraceptives, anticoagulants, protease inhibitors, phenytoin, theophylline, cardiac glycosides and other drugs.
Topical intranasal mupirocin may be used bid for 5 days with or without systemic antimicrobial therapy.
Skin antiseptics with chlorhexidine or other agents may be used in addition to one or both of the above regimens.

